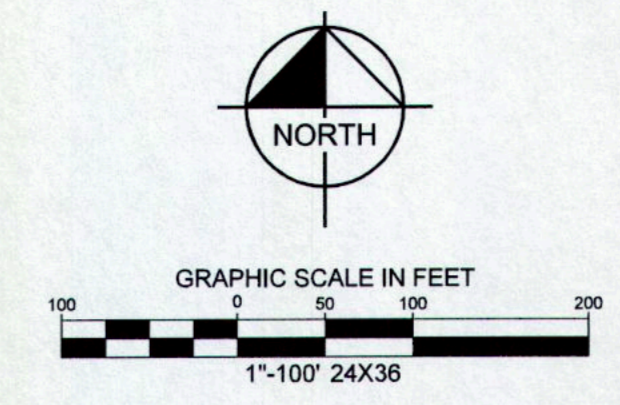


**BENCH MARK LIST**

- BM#1 TXDOT CONTROL POINT NO. E0430313 BEING A 2-INCH ALUMINUM DISK STAMPED "TXDOT DALLAS GPS E0430313" FOUND IN CONCRETE, ±51 FEET WEST OF STATE HIGHWAY 5 AT FANNIN ROAD.  
ELEV=661.43
- BM#2 TXDOT CONTROL POINT NO. E0430261 BEING A 4-INCH ALUMINUM DISK FOUND IN THE GRASS ±54 FEET NORTH FROM NORTHEAST CORNER OF BIBLE CHURCH SIGN, ±73 FEET SOUTHEAST FROM TELEPHONE PEDESTAL, ±90.5 FEET SOUTH FROM CR 377/1375 SIGN AND ±241 FEET NORTH FROM THE CENTER OF COUNTY ROAD 375.  
ELEV=762.84
- BM#3 SQUARE CUT WITH "X" CUT SET ON NORTHEAST CORNER OF CONCRETE HEADWALL LOCATED ±13 FEET WEST OF GREENVILLE DRIVE AND ±1290 FEET NORTH OF STACY ROAD.  
ELEV=644.21
- BM#4 BENCH TIE NAIL SET IN NORTH SIDE OF POWER POLE LOCATED ±16 FEET WEST OF GREENVILLE DRIVE AND ±54 FEET NORTH OF STACY ROAD.  
ELEV=673.51
- BM#5 SQUARE CUT ON NORTHEAST CORNER OF CURB INLET ON THE NORTH SIDE OF FRISCO ROAD, ±430 FEET WEST OF THE INTERSECTION OF FRISCO ROAD AND GREENVILLE DRIVE, ±755 FEET EAST OF INTERSECTION OF FRISCO ROAD AND MEDICAL CENTER DRIVE.  
ELEV=632.28
- BM#6 SQUARE CUT ON BACK OF CURB INLET ON THE SOUTHEAST SIDE OF CENTRAL EXPRESSWAY, ±75 FEET NORTHEAST OF THE INTERSECTION OF CENTRAL EXPRESSWAY AND FRISCO ROAD.  
ELEV=660.64
- BM#7 SQUARE CUT ON SOUTH CORNER OF CURB INLET ON THE SOUTHEAST SIDE OF FAIRVIEW PARKWAY, ±320 FEET SOUTHWEST FROM THE INTERSECTION OF FAIRVIEW PARKWAY AND RIDGEVIEW DRIVE.  
ELEV=642.22



**NOTES:**

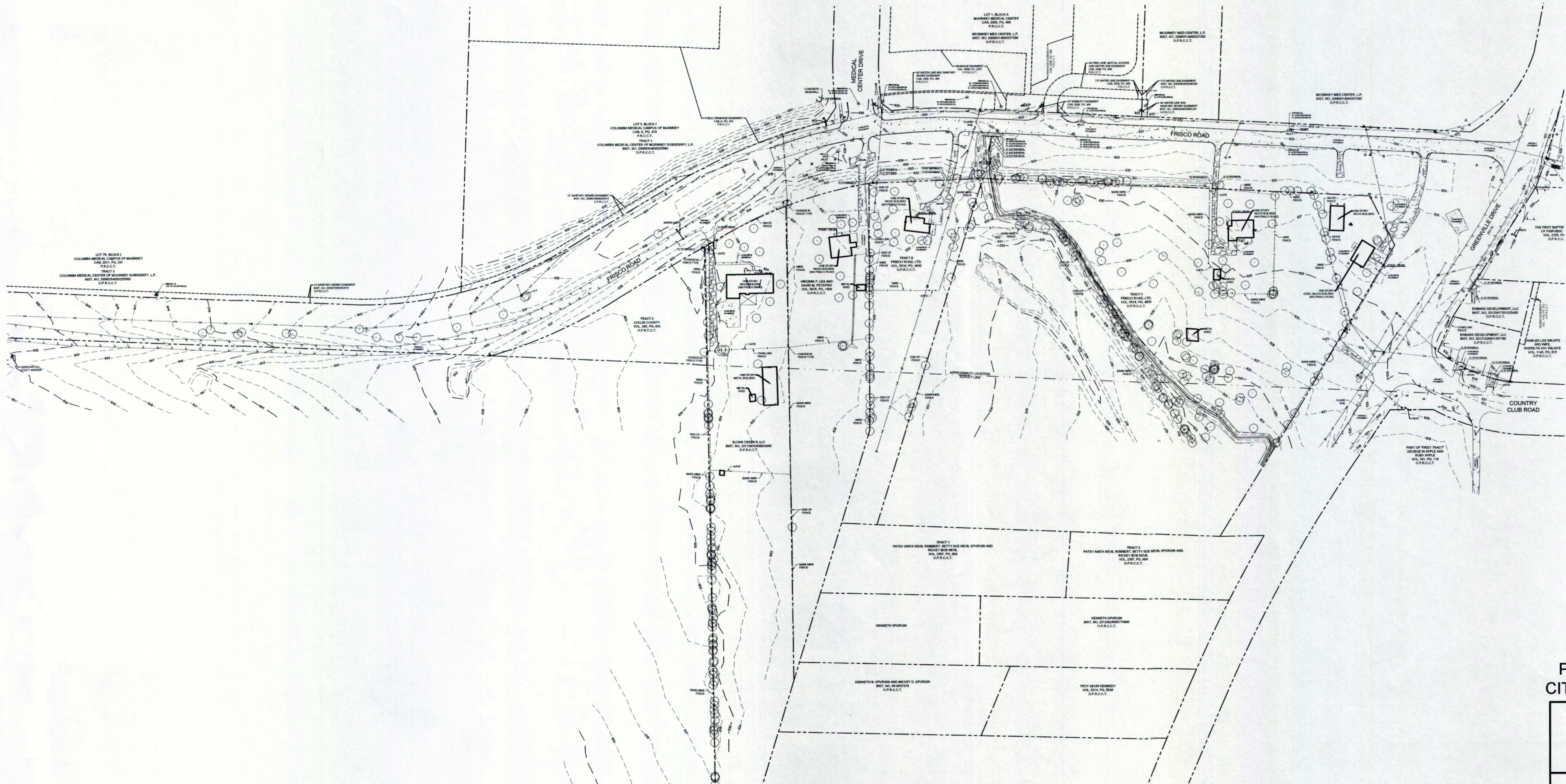
All bearings shown are based on grid north of the Texas Coordinate System of 1983, North Central Zone (4202), North American Datum of 1983. All dimensions shown are ground distances.

The property is shown on Map No. 48085C0270J, Community Panel No. 481069 0270 J, dated June 2, 2009 of the National Flood Insurance Program Map, Flood Insurance Rate Map of Collin County, Texas, Federal Emergency Management Agency, Federal Insurance Administration.

The surveyor did not abstract the surveyed property. This survey was performed without the benefit of a current title abstract.

**LEGEND**

ROOF DRAIN	MAIL BOX
CABLE TV BOX	NEWS STAND
CABLE TV HANDHOLE	PHONE BOOTH
CABLE TV MANHOLE	SECURITY CAMERA
CABLE TV MARKER FLAG	TRASH BIN
CABLE TV MARKER SIGN	SANITARY SEWER BOX
CABLE TV VAULT	SANITARY SEWER CLEAN OUT
COMMUNICATIONS BOX	SANITARY SEWER HANDHOLE
COMMUNICATIONS HANDHOLE	SANITARY SEWER LIFT STATION
COMMUNICATIONS MANHOLE	SANITARY SEWER METER
COMMUNICATIONS MARKER FLAG	SANITARY SEWER MANHOLE
COMMUNICATIONS MARKER SIGN	SANITARY SEWER MARKER FLAG
COMMUNICATIONS VAULT	SANITARY SEWER MARKER SIGN
ELEVATION BENCHMARK	SANITARY SEWER SEPTIC TANK
FLOW DIRECTION	SANITARY SEWER VAULT
FIBER OPTIC BOX	STORM SEWER BOX
FIBER OPTIC HANDHOLE	STORM SEWER DRAIN
FIBER OPTIC MANHOLE	STORM SEWER HANDHOLE
FIBER OPTIC MARKER FLAG	STORM SEWER METER
FIBER OPTIC MARKER SIGN	STORM SEWER MANHOLE
FIBER OPTIC VAULT	STORM SEWER MARKER FLAG
MONITORING WELL	STORM SEWER MARKER SIGN
FUEL TANK	STORM SEWER VAULT
GAS BOX	TRAFFIC BARRIER
GAS HANDHOLE	TRAFFIC BOLLARD
GAS MANHOLE	TRAFFIC BOX
GAS MARKER FLAG	CROSS WALK SIGNAL
GAS MARKER SIGN	TRAFFIC HANDHOLE
GAS SIGN	TRAFFIC MANHOLE
GAS TANK	TRAFFIC MARKER SIGN
GAS VAULT	TRAFFIC CAMERA
GAS VALVE	TRAFFIC SENSOR
GAS WELL	TRAFFIC SIGNAL
TELEPHONE BOX	TRAFFIC VAULT
TELEPHONE HANDHOLE	UNIDENTIFIED BOX
TELEPHONE MANHOLE	UNIDENTIFIED HANDHOLE
TELEPHONE MARKER FLAG	UNIDENTIFIED MARKER FLAG
TELEPHONE MARKER SIGN	UNIDENTIFIED METER
TELEPHONE VAULT	UNIDENTIFIED MANHOLE
PIPELINE BOX	UNIDENTIFIED MARKER SIGN
PIPELINE HANDHOLE	UNIDENTIFIED POLE
PIPELINE METER	UNIDENTIFIED TANK
PIPELINE MANHOLE	UNIDENTIFIED VAULT
PIPELINE MARKER FLAG	UNIDENTIFIED VALVE
PIPELINE MARKER SIGN	TREE
PIPELINE VAULT	WATER BOX
PIPELINE VALVE	FIRE DEPT. CONNECTION
ELECTRIC BOX	WATER HAND HOLE
ELECTRIC MANHOLE	FIRE HYDRANT
GUY ANCHOR	WATER METER
GUY ANCHOR POLE	WATER MANHOLE
LIGHT STANDARD	WATER MARKER FLAG
ELECTRIC METER	WATER MARKER SIGN
ELECTRIC MANHOLE	WATER TANK
ELECTRIC MARKER FLAG	WATER VAULT
ELECTRIC MARKER SIGN	WATER VALVE
UTILITY POLE	AIR RELEASE VALVE
ELECTRIC SWITCH	WATER WELL
ELECTRIC TRANSFORMER	8" IRON ROD W/ "X" CAP SET
ELECTRIC VAULT	8" IRON ROD WITH CAP FOUND
HANDICAPPED PARKING	PK MAIL SET
PARKING METER	PK MAIL FOUND
RAILROAD BOX	"X" CUT IN CONCRETE SET
RAILROAD HANDHOLE	"X" CUT IN CONCRETE FOUND
RAILROAD SIGNAL	P.O.B. POINT OF BEGINNING
RAILROAD SIGN	P.O.C. POINT OF COMMENCING
RAILROAD VAULT	SIGN
MARKET/REBILLBOARD	AC UNIT
BASKET BALL GOAL	BORE LOCATION
FLAG POLE	GOAL POST
GREASE TRAP	IRRIGATION VALVE



TOPOGRAPHIC SURVEY  
 PROPOSED FAIRVIEW PARKWAY NORTH  
 CITY OF FAIRVIEW, COLLIN COUNTY, TEXAS

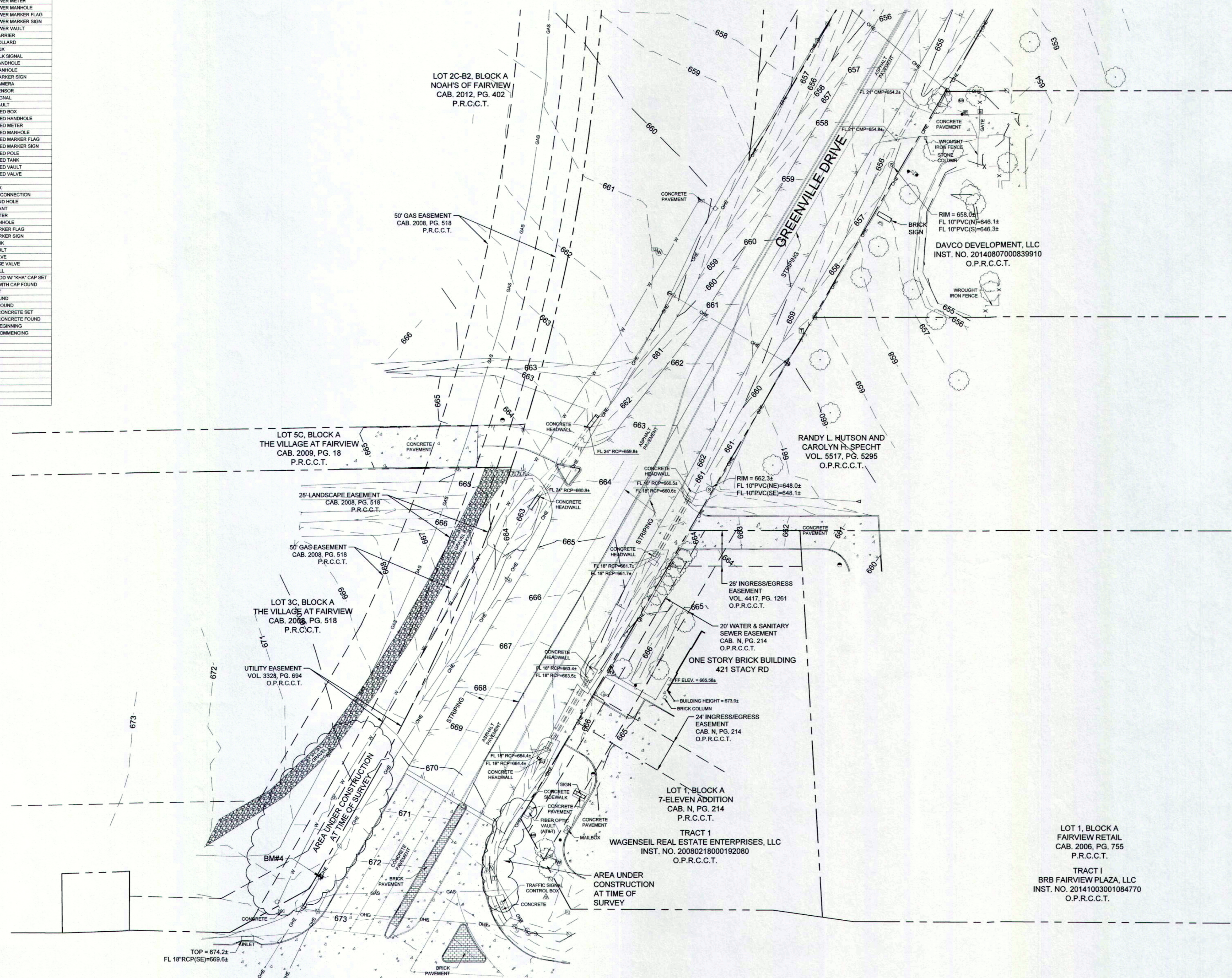
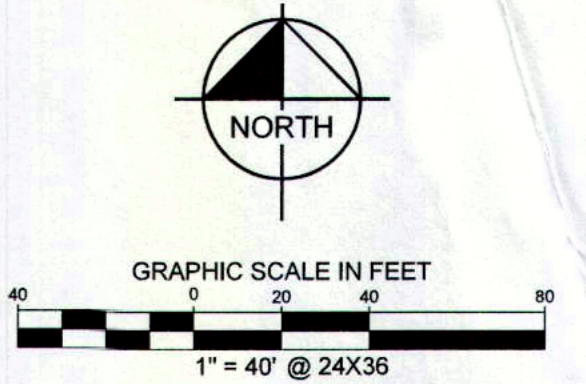
**Kimley»Horn**

12750 Merit Drive, Suite 1000 Dallas, Texas 75251 FIRM # 10115500 Tel. No. (972) 770-1300 Fax No. (972) 239-3820

Scale	Drawn by	Checked by	Date	Project No.	Sheet No.
1" = 100'	JAD	DAB	OCT. 2015	081182003	4 OF 4



LEGEND	
ROOF DRAIN	MAIL BOX
CABLE TV BOX	NEWS STAND
CABLE TV HANDHOLE	PHONE BOOTH
CABLE TV MANHOLE	SECURITY CAMERA
CABLE TV MARKER FLAG	TRASH BIN
CABLE TV MARKER SIGN	SANITARY SEWER BOX
CABLE TV VAULT	SANITARY SEWER CLEAN OUT
COMMUNICATIONS BOX	SANITARY SEWER HANDHOLE
COMMUNICATIONS MANHOLE	SANITARY SEWER LIFT STATION
COMMUNICATIONS MARKER FLAG	SANITARY SEWER METER
COMMUNICATIONS MARKER SIGN	SANITARY SEWER MANHOLE
COMMUNICATIONS VAULT	SANITARY SEWER MARKER FLAG
ELEVATION BENCHMARK	SANITARY SEWER MARKER SIGN
FLOW DIRECTION	SANITARY SEWER SEPTIC TANK
FIBER OPTIC BOX	STORM SEWER VAULT
FIBER OPTIC HANDHOLE	STORM SEWER BOX
FIBER OPTIC MANHOLE	STORM SEWER DRAIN
FIBER OPTIC MARKER FLAG	STORM SEWER HANDHOLE
FIBER OPTIC MARKER SIGN	STORM SEWER METER
FIBER OPTIC VAULT	STORM SEWER MANHOLE
MONITORING WELL	STORM SEWER MARKER FLAG
FUEL TANK	STORM SEWER MARKER SIGN
GAS BOX	STORM SEWER VAULT
GAS HANDHOLE	TRAFFIC BOLLARD
GAS METER	TRAFFIC BOX
GAS MANHOLE	CROSS WALK SIGNAL
GAS MARKER FLAG	TRAFFIC HANDHOLE
GAS SIGN	TRAFFIC MANHOLE
GAS TANK	TRAFFIC MARKER SIGN
GAS VAULT	TRAFFIC CAMERA
GAS VALVE	TRAFFIC SENSOR
GAS WELL	TRAFFIC SIGNAL
TELEPHONE BOX	TRAFFIC VAULT
TELEPHONE HANDHOLE	UNIDENTIFIED BOX
TELEPHONE MANHOLE	UNIDENTIFIED HANDHOLE
TELEPHONE MARKER FLAG	UNIDENTIFIED METER
TELEPHONE MARKER SIGN	UNIDENTIFIED MANHOLE
TELEPHONE VAULT	UNIDENTIFIED MARKER FLAG
PIPELINE BOX	UNIDENTIFIED MARKER SIGN
PIPELINE HANDHOLE	UNIDENTIFIED POLE
PIPELINE METER	UNIDENTIFIED TANK
PIPELINE MANHOLE	UNIDENTIFIED VAULT
PIPELINE MARKER FLAG	UNIDENTIFIED VALVE
PIPELINE MARKER SIGN	UNIDENTIFIED TANK
PIPELINE VAULT	WATER BOX
PIPELINE VALVE	FIRE DEPT CONNECTION
ELECTRIC BOX	WATER HAND HOLE
FLOOD LIGHT	FIRE HYDRANT
GUY ANCHOR	WATER METER
GUY ANCHOR POLE	WATER MANHOLE
ELECTRIC MANHOLE	WATER MARKER FLAG
LIGHT STANDARD	WATER MARKER SIGN
ELECTRIC METER	WATER TANK
ELECTRIC MANHOLE	WATER VAULT
ELECTRIC MARKER FLAG	WATER VALVE
ELECTRIC MARKER SIGN	AIR RELEASE VALVE
UTILITY POLE	WATER WELL
ELECTRIC SWITCH	IRISC 5/8" IRON ROD W/ "3/4" CAP SET
ELECTRIC TRANSFORMER	IRISC IRON ROD WITH CAP FOUND
ELECTRIC VAULT	PKS PK NAIL SET
HANDICAPPED PARKING	PKF PK NAIL FOUND
PARKING METER	IRF IRON ROD FOUND
RAILROAD BOX	XS "X" CUT IN CONCRETE SET
RAILROAD HANDHOLE	XF "X" CUT IN CONCRETE FOUND
RAILROAD SIGNAL	P.O.B. POINT OF BEGINNING
RAILROAD SIGN	P.O.C. POINT OF COMMENCING
RAILROAD VAULT	
SIGN	
MARQUEEBILLBOARD	
A.C. UNIT	
BASKET BALL GOAL	
BORE LOCATION	
FLAG POLE	
GOAL POST	
GREASE TRAP	
IRRIGATION VALVE	



BENCH MARK LIST	
BM#1	TXDOT CONTROL POINT NO. E0430313 BEING A 2-INCH ALUMINUM DISK STAMPED "TXDOT DALLAS GPS E0430313" FOUND IN CONCRETE, ±51 FEET WEST OF STATE HIGHWAY 5 AT FANNIN ROAD. ELEV=661.43
BM#2	TXDOT CONTROL POINT NO. E0430261 BEING A 4-INCH ALUMINUM DISK FOUND IN THE GRASS ±54 FEET NORTH FROM NORTHEAST CORNER OF BIBLE CHURCH SIGN, ±73 FEET SOUTHEAST FROM TELEPHONE PEDESTAL, ±90.5 FEET SOUTH FROM CR 377/1375 SIGN AND ±241 FEET NORTH FROM THE CENTER OF COUNTY ROAD 375. ELEV=762.64
BM#3	SQUARE CUT WITH "X" CUT SET ON NORTHEAST CORNER OF CONCRETE HEADWALL LOCATED ±13 FEET WEST OF GREENVILLE DRIVE AND ±1290 FEET NORTH OF STACY ROAD. ELEV=644.21
BM#4	BENCH TIE NAIL SET IN NORTH SIDE OF POWER POLE LOCATED ±16 FEET WEST OF GREENVILLE DRIVE AND ±54 FEET NORTH OF STACY ROAD. ELEV=673.51
BM#5	SQUARE CUT ON NORTHEAST CORNER OF CURB INLET ON THE NORTH SIDE OF FRISCO ROAD, ±430 FEET WEST OF THE INTERSECTION OF FRISCO ROAD AND GREENVILLE DRIVE, ±755 FEET EAST OF INTERSECTION OF FRISCO ROAD AND MEDICAL CENTER DRIVE. ELEV=632.28
BM#6	SQUARE CUT ON BACK OF CURB INLET ON THE SOUTHEAST SIDE OF CENTRAL EXPRESSWAY, ±75 FEET NORTHEAST OF THE INTERSECTION OF CENTRAL EXPRESSWAY AND FRISCO ROAD. ELEV=660.64
BM#7	SQUARE CUT ON SOUTH CORNER OF CURB INLET ON THE SOUTHEAST SIDE OF FAIRVIEW PARKWAY, ±320 FEET SOUTHWEST FROM THE INTERSECTION OF FAIRVIEW PARKWAY AND RIDGEVIEW DRIVE. ELEV=642.22

**NOTES:**

All bearings shown are based on grid north of the Texas Coordinate System of 1983, North Central Zone (4202), North American Datum of 1983. All dimensions shown are ground distances.

The property is shown on Map No. 48085C0270J, Community Panel No. 481069 0270 J, dated June 2, 2009 of the National Flood Insurance Program Map, Flood Insurance Rate Map of Collin County, Texas, Federal Emergency Management Agency, Federal Insurance Administration.

The surveyor did not abstract the surveyed property. This survey was performed without the benefit of a current title abstract.

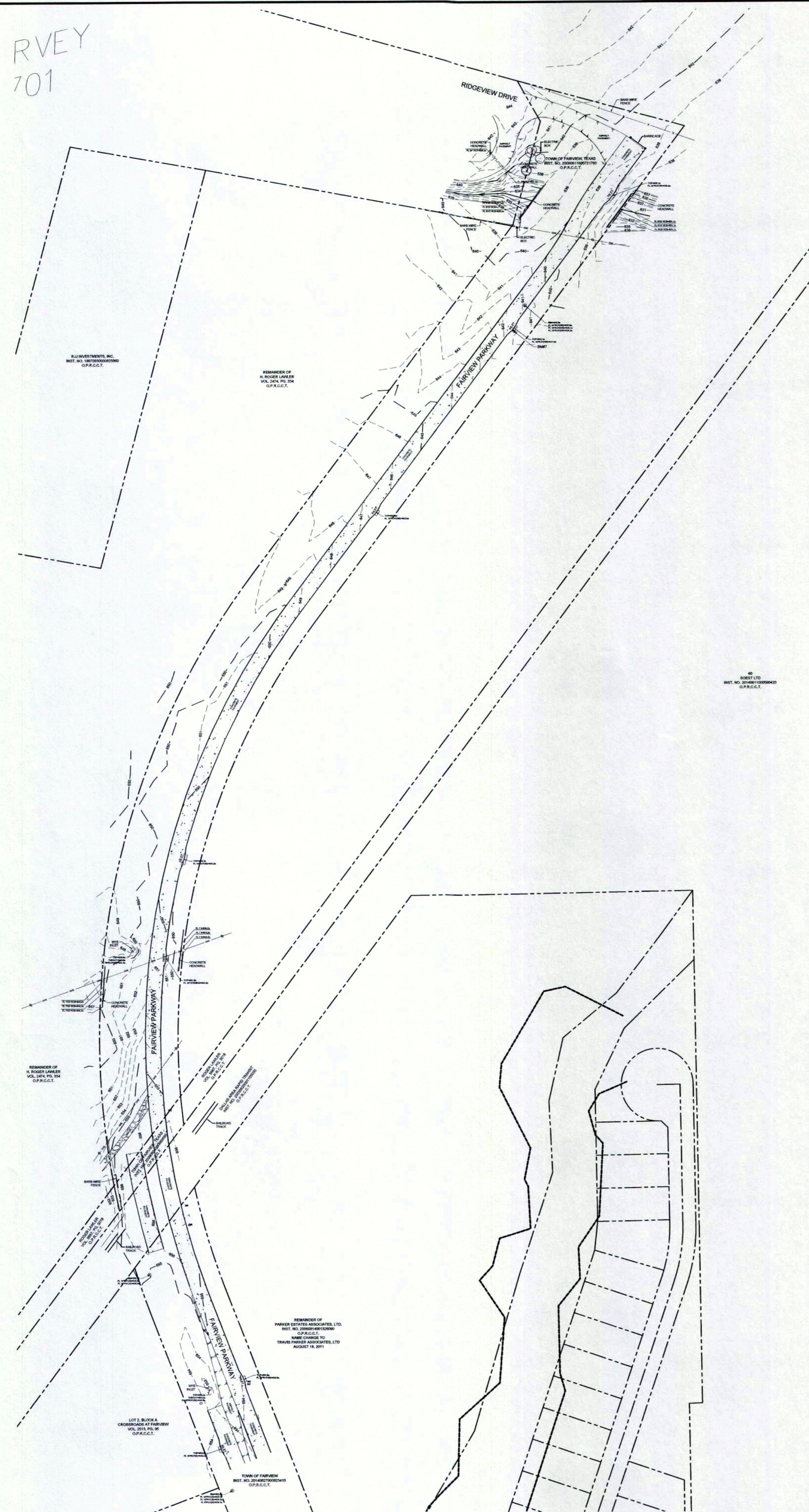
**TOPOGRAPHIC SURVEY  
PROPOSED FAIRVIEW PARKWAY SOUTH  
CITY OF FAIRVIEW, COLLIN COUNTY, TEXAS**

**Kimley»Horn**

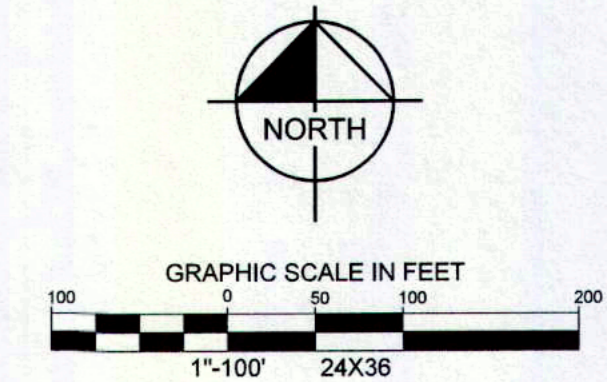
12750 Merit Drive, Suite 1000 Dallas, Texas 75251 FIRM # 10115500 Tel. No. (972) 770-1300 Fax No. (972) 239-3820

Scale	Drawn by	Checked by	Date	Project No.	Sheet No.
1" = 40'	C/JG/JAD	DAB	OCT. 2015	061182003	1 OF 2

RVEY  
701



LEGEND	
□	ROOF DRAIN
□	CABLE TV BOX
□	CABLE TV HANDHOLE
□	CABLE TV MANHOLE
□	CABLE TV MARKER FLAG
□	CABLE TV MARKER SIGN
□	COMMUNICATIONS BOX
□	COMMUNICATIONS HANDHOLE
□	COMMUNICATIONS MANHOLE
□	COMMUNICATIONS MARKER FLAG
□	COMMUNICATIONS MARKER SIGN
□	COMMUNICATIONS VAULT
□	ELEVATION BENCHMARK
→	FLOW DIRECTION
□	FIBER OPTIC BOX
□	FIBER OPTIC HANDHOLE
□	FIBER OPTIC MANHOLE
□	FIBER OPTIC MARKER FLAG
□	FIBER OPTIC MARKER SIGN
□	FIBER OPTIC VAULT
□	MONITORING WELL
□	FUEL TANK
□	GAS BOX
□	GAS HANDHOLE
□	GAS METER
□	GAS MANHOLE
□	GAS MARKER FLAG
□	GAS SIGN
□	GAS TANK
□	GAS VAULT
□	GAS VALVE
□	GAS WELL
□	TELEPHONE BOX
□	TELEPHONE HANDHOLE
□	TELEPHONE MANHOLE
□	TELEPHONE MARKER FLAG
□	TELEPHONE MARKER SIGN
□	TELEPHONE VAULT
□	PIPELINE BOX
□	PIPELINE HANDHOLE
□	PIPELINE MANHOLE
□	PIPELINE MARKER FLAG
□	PIPELINE MARKER SIGN
□	PIPELINE VAULT
□	PIPELINE VALVE
□	ELECTRIC BOX
□	FLOOD LIGHT
□	GUY ANCHOR
□	GUY ANCHOR POLE
□	ELECTRIC MANHOLE
□	LIGHT STANDARD
□	ELECTRIC METER
□	ELECTRIC MANHOLE
□	ELECTRIC MARKER FLAG
□	ELECTRIC MARKER SIGN
□	UTILITY POLE
□	ELECTRIC SWITCH
□	ELECTRIC TRANSFORMER
□	ELECTRIC VAULT
□	HANDICAPPED PARKING
□	PARKING METER
□	RAILROAD BOX
□	RAILROAD HANDHOLE
□	RAILROAD SIGNAL
□	RAILROAD SIGN
□	RAILROAD VAULT
□	SKIN
□	MARQUEE/BILLBOARD
□	AC UNIT
□	BASKET BALL GOAL
□	BORE LOCATION
□	FLAG POLE
□	GOAL POST
□	GREASE TRAP
□	IRRIGATION VALVE
□	MAIL BOX
□	NEWS STAND
□	PHONE BOOTH
□	SECURITY CAMERA
□	TRASH BIN
□	SANITARY SEWER BOX
□	SANITARY SEWER CLEAN OUT
□	SANITARY SEWER HANDHOLE
□	SANITARY SEWER LIFT STATION
□	SANITARY SEWER MANHOLE
□	SANITARY SEWER MARKER FLAG
□	SANITARY SEWER MARKER SIGN
□	SANITARY SEWER SEPTIC TANK
□	SANITARY SEWER VAULT
□	STORM SEWER BOX
□	STORM SEWER DRAWN
□	STORM SEWER HANDHOLE
□	STORM SEWER METER
□	STORM SEWER MANHOLE
□	STORM SEWER MARKER FLAG
□	STORM SEWER MARKER SIGN
□	STORM SEWER VAULT
□	TRAFFIC BARRIER
□	TRAFFIC BOLLARD
□	TRAFFIC BOX
□	CROSS WALK SIGNAL
□	TRAFFIC HANDHOLE
□	TRAFFIC MANHOLE
□	TRAFFIC MARKER SIGN
□	TRAFFIC CAMERA
□	TRAFFIC SENSOR
□	TRAFFIC SIGNAL
□	TRAFFIC VAULT
□	UNIDENTIFIED BOX
□	UNIDENTIFIED HANDHOLE
□	UNIDENTIFIED METER
□	UNIDENTIFIED MANHOLE
□	UNIDENTIFIED MARKER FLAG
□	UNIDENTIFIED MARKER SIGN
□	UNIDENTIFIED POLE
□	UNIDENTIFIED TANK
□	UNIDENTIFIED VAULT
□	UNIDENTIFIED VALVE
□	TREE
□	WATER BOX
□	FIRE DEPT. CONNECTION
□	WATER HAND HOLE
□	FIRE HYDRANT
□	WATER METER
□	WATER MANHOLE
□	WATER MARKER FLAG
□	WATER MARKER SIGN
□	WATER TANK
□	WATER VAULT
□	WATER VALVE
□	AIR RELEASE VALVE
□	WATER WELL
□	6" IRON ROD W/ 1/2" CAP SET
□	8" IRON ROD W/ 1/2" CAP SET
□	PKS PK NAIL SET
□	PKF PK NAIL FOUND
□	RFK RFK ROD FOUND
□	X5 "X" CUT IN CONCRETE SET
□	XF "X" CUT IN CONCRETE FOUND
□	P.O.B. POINT OF BEGINNING
□	P.O.C. POINT OF COMMENCING



BENCH MARK LIST	
BM#1	TXDOT CONTROL POINT NO. E0430313 BEING A 2-INCH ALUMINUM DISK STAMPED "TXDOT DALLAS GPS E0430313" FOUND IN CONCRETE, ±51 FEET WEST OF STATE HIGHWAY 5 AT FANNIN ROAD. ELEV=661.43
BM#2	TXDOT CONTROL POINT NO. E0430261 BEING A 4-INCH ALUMINUM DISK FOUND IN THE GRASS ±54 FEET NORTH FROM NORTHEAST CORNER OF BIBLE CHURCH SIGN, ±73 FEET SOUTHEAST FROM TELEPHONE PEDESTAL, ±90.5 FEET SOUTH FROM CR 377/1375 SIGN AND ±241 FEET NORTH FROM THE CENTER OF COUNTY ROAD 375. ELEV=762.64
BM#3	SQUARE CUT WITH "X" CUT SET ON NORTHEAST CORNER OF CONCRETE HEADWALL LOCATED ±13 FEET WEST OF GREENVILLE DRIVE AND ±1290 FEET NORTH OF STACY ROAD. ELEV=644.21
BM#4	BENCH TIE NAIL SET IN NORTH SIDE OF POWER POLE LOCATED ±16 FEET WEST OF GREENVILLE DRIVE AND ±54 FEET NORTH OF STACY ROAD. ELEV=673.51
BM#5	SQUARE CUT ON NORTHEAST CORNER OF CURB INLET ON THE NORTH SIDE OF FRISCO ROAD, ±430 FEET WEST OF THE INTERSECTION OF FRISCO ROAD AND GREENVILLE DRIVE, ±755 FEET EAST OF INTERSECTION OF FRISCO ROAD AND MEDICAL CENTER DRIVE. ELEV=632.28
BM#6	SQUARE CUT ON BACK OF CURB INLET ON THE SOUTHEAST SIDE OF CENTRAL EXPRESSWAY, ±75 FEET NORTHEAST OF THE INTERSECTION OF CENTRAL EXPRESSWAY AND FRISCO ROAD. ELEV=660.64
BM#7	SQUARE CUT ON SOUTH CORNER OF CURB INLET ON THE SOUTHEAST SIDE OF FAIRVIEW PARKWAY, ±320 FEET SOUTH-WEST FROM THE INTERSECTION OF FAIRVIEW PARKWAY AND RIDGEVIEW DRIVE. ELEV=642.22

**NOTES:**

All bearings shown are based on grid north of the Texas Coordinate System of 1983, North Central Zone (4202), North American Datum of 1983. All dimensions shown are ground distances.

The property is shown on Map No. 48085C0270J, Community Panel No. 481069 0270 J, dated June 2, 2009 of the National Flood Insurance Program Map, Flood Insurance Rate Map of Collin County, Texas, Federal Emergency Management Agency, Federal Insurance Administration.

The surveyor did not abstract the surveyed property. This survey was performed without the benefit of a current title abstract.

TOPOGRAPHIC SURVEY  
PROPOSED FAIRVIEW PARKWAY NORTH  
CITY OF FAIRVIEW, COLLIN COUNTY, TEXAS

**Kimley»Horn**

12750 Merit Drive, Suite 1000 Dallas, Texas 75251 FIRM # 10115500 Tel. No. (972) 770-1300 Fax No. (972) 239-3820

Scale	Drawn by	Checked by	Date	Project No.	Sheet No.
1" = 100'	JAD	DAB	OCT. 2015	061182003	1 OF 4



